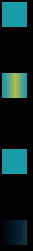




Managed Detection & Response



maverc.com



Why do organizations power their endpoint protection, security operations, and threat hunting programs with **Maverc's MDR**? Speed, scalability, and the power of the open source community. By implementing **Maverc's MDR** products within your SOC, your team is equipped with the technology validated by industry experts.

Advanced enterprise protection
Outsmart adversaries with multi-layered protection

Stop attacks across the MITRE ATT&CK® Matrix autonomously and in real-time, with Zero impact on the end-user, with our best in class endpoint prevention. Secure all your endpoints, whether they're running on Windows, macOS, or Linux, with signature-less protections that are instead powered by machine learning. Be confident you're continuously protected by our elite threat hunter team who rapidly investigate, contain and shut down threats on your behalf.

Security at scale
See the complete picture of your attack surface

Our Multi-Signal technology stack simplifies and streamlines the process of searching, visualizing, and analyzing data from various sources including IoT, OT, network, and endpoint. Our technology enables deeper correlation and investigation capabilities, proven to contain threats faster. A Resource-based cost model- reduces expenses with-out compromise to your security coverage -pay for only what you use.

Force Multiply your security program
Rapid, Robust Response

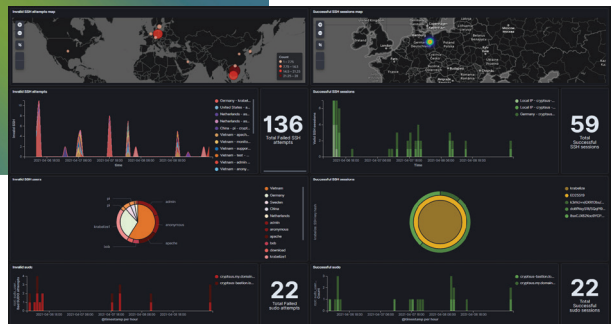
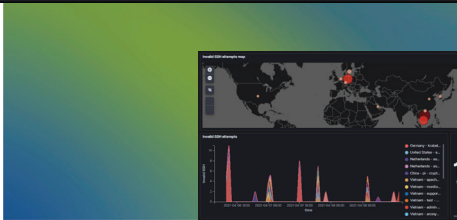
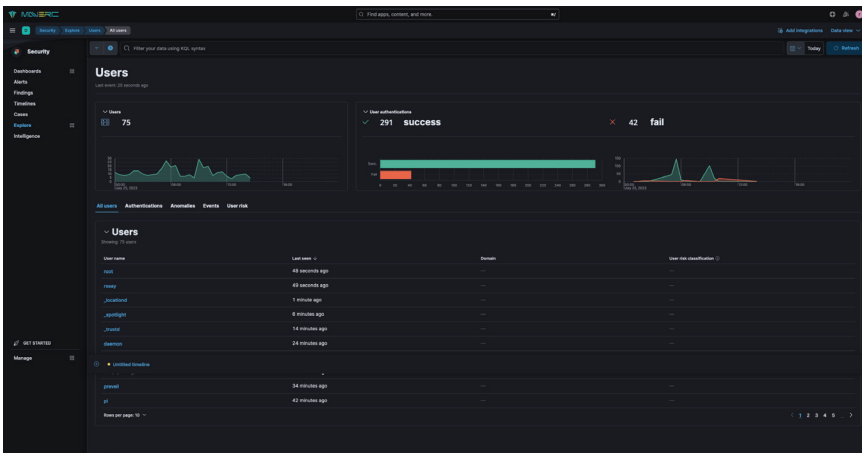
Many cybersecurity tools bank on automation to mitigate malicious activities, but crafty hackers are finding ways to circumvent these systems. The Maverc Threat response (T.R.T.) team steps in to address a vital void in your security infrastructure. This dedicated team of seasoned security professionals is always on alert. They delve into potential risks, study hacker tactics, formulate incident reports, and assist in mitigating cyber threats helping your business avoid disruption.

Drag-and-drop data visualization
Visualize data in a snap

Intuitive Security dashboards provide real-time analysis of various data types like files, registry, user, process, network, and DNS, clearly illustrating the source, reach, and progression of an attack. Our team of threat hunters can quickly investigate and interpret data from hundreds of thousands of logs and endpoints instantaneously, enabling them to identify the root cause swiftly and take necessary actions

Capability designed to protect the organizations that need it the most

Leveraging a potent mix of advanced technology and professional acumen, Maveric's managed detection and response services empowers small to mid-sized businesses, enabling them to address gaps in their cybersecurity posture. We offer a refined, affordable solution tailored to your company's unique needs. Our goal is to maximize the ROI of our customers by taking a hands-on approach to delivering our services. Our unwavering commitment to community education and empowerment- make Maveric a unique ally in the fight against cyber threats.



Key Features

24/7 Continuous Monitoring	Maverc customer portal access and real-time visualizations
24/7 Incident Response/Expert Support	Expert-led investigations
24/7 Threat Hunting	Incident containment and mitigation
XDR deployed anywhere; on-premise or in the cloud	Detailed reports with analysis and security recommendations
Multi-signal Coverage and Visibility	Threat Advisories, Threat Intel and Subject Matter Expertise
Support Mean Time to Contain: 30 minutes	Customer Success Advisor
Automated Detections with Hashes, IOCs, IPs & Vulnerabilities	Quarterly Business Reviews and Security Posture Improvement planning
800 Pre-Built Detection Rules Mapped to MIRE Attack Framework	Machine Learning XDR algorithm

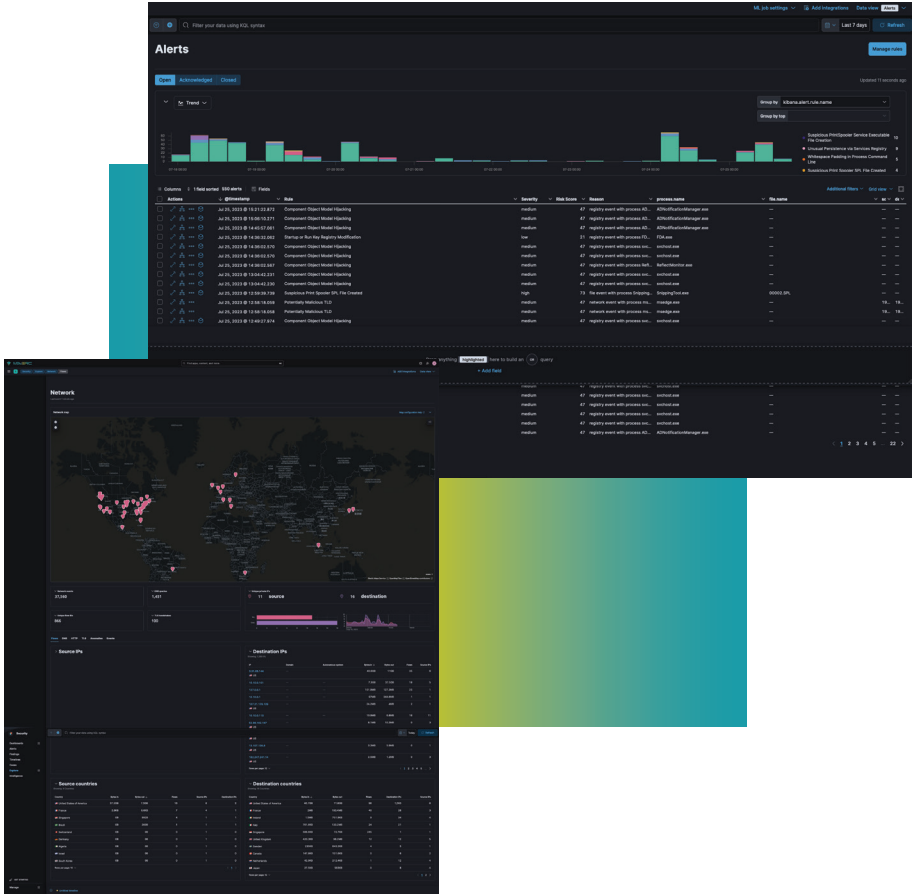
Protection without Compromise

	MULTI-SIGNAL Data Sources	INVESTIGATION Insights	AUTOMATED RESPONSE Capability
24/7 Investigation & Response	Network		
	Endpoint		
24/7 Investigation Correlation	Log		
	Cloud		
	Insider		
	Vulnerability		
	OT/IoT		

Maverc services are trusted by Leaders Across Industry and Government



Security without Boundaries



Maverc's Managed Detection & Response Service has been used by security teams and organizations to conduct fast and effective threat hunting and SecOps. Now, by integrating two critical components of cybersecurity — endpoint security and SIEM —Maverc's MDR provides prevention, detection, and response capabilities for unified protection across your infrastructure.

Want to check it out for yourself, please contact us at maverc.com

Swiftly Detect, Effectively
Respond, and Confidently
Recover from cyber attacks.



maverc.com

Info@Maverc.com (888) 948-1468